

EnterpriseBACKUP for OpenVMS Installation and Quick Start Guide [Download Version](#)

System Requirements for AXP OpenVMS Systems:

- VMS V6.1 or later.
- System account
- 20000 blocks during installation
- 17000 blocks after installation
- 1900 global pages

Welcome to the EnterpriseBACKUP for OpenVMS Installation and Quick Start guide. You must download the appropriate files from our FTP site support.i-s-e.com to perform the installation. Before you begin installation, please review the minimum system requirements listed on the left. The complete EnterpriseBACKUP documentation set is included on our support site. This Quick Start Guide will guide you through the installation of the product and help familiarize you with the most commonly used operations of the software. If you have any questions regarding the product, you can contact ISE at (310) 643-7310.

Note: You must install MCL before installing EnterpriseBACKUP. See section 1b below for instructions.

1 Installing EnterpriseBACKUP for OpenVMS

1a Loading the EnterpriseBACKUP License PAK

EnterpriseBACKUP requires the installation of the included EnterpriseBACKUP license PAK prior to installation. To load the PAK, enter the command:

```
$ @SYS$UPDATE:VMSLICENSE
```

Select option 1.

```
* Do you have your Product Authorization Key? [YES]: YES
```

Enter the PAK information as prompted. You will be asked to confirm the information and to load the license on the system. Answer YES to both these prompts.

1b Downloading and installing the software

To download the software, you must have FTP access to the internet from an OpenVMS session. Start by entering the following FTP command:

```
$ FTP support.i-s-e.com
```

Enter your user name and password. Next, change directories to the MCL distribution directory:

```
FTP> cd /latest_mcl/kit
```

Download the savesets using the following commands:

```
FTP> GET/FDL MCL021.a
```

```
FTP> GET/FDL MCL021.c
```

Run the MCL installation procedure:

```
$ @SYS$UPDATE:VMSINSTAL MCL ddcu:[directoryname]
```

Change directories to the MEDIA (EnterpriseBACKUP) distribution directory:

```
FTP> cd /latest_mvms/kit
```

Download the savesets using the following commands:

```
FTP> GET/FDL MEDIA051.a
```

```
FTP> GET/FDL MEDIA051.c
```

Run the MEDIA installation procedure:

```
$ @SYS$UPDATE:VMSINSTAL MEDIA ddcu:[directoryname]
```

1c Completing the installation

After the installation completes if you requested that SYSMAN not be updated be sure to add the following command to the system startup file

```
$ @SYS$STARTUP:MEDIA_STARTUP
```

Define the needed foreign commands by adding to the system wide login file the following command:

```
$ @MEDIA_LIBRARY:MEDIA_LOGIN
```

```
$ @MCL_LIBRARY:MCL_LOGIN
```

You are now ready to try out EnterpriseBACKUP

2 Getting started with EnterpriseBACKUP

2a Configuring EnterpriseBACKUP to use your devices

EnterpriseBACKUP must be configured before backups and tape librarian operations may be performed. The three areas that must be configured are:

- **Queues** - As installed, EnterpriseBACKUP sets up a queue, SYS\$TAPE, for use with TAPE type. This means all backups of this type will be processed in the queue designated by SYS\$TAPE. You may use this generic queue or set up other queues for backup job execution.
- **Types** - Backup devices are categorized into TYPES. You may have multiple devices (e.g. all your DAT drives) of a particular type and multiple types associated with a particular queue.
- **Devices** - The devices that are to be used for backups and tape librarian procedures must be assigned to a type.

You configure EnterpriseBACKUP using MEDIAS commands.

Enter the MEDIAS prompt by typing

```
$ MEDIAS
```

```
MEDIAS>_
```

1. Assign devices to types - Configure types using a command similar to this example substituting your device names for the name shown:

```
MEDIAS> SET DLT0 == "TAPE, MKA300:"
```

```
MEDIAS> SET DLT1 == "TAPE, MKA400:"
```

What it does: Creates the type DLT (DLT0 and DLT1 are of the same type but will use different devices) and assigns the tape devices MKA300 and MKA400 to those types. Backup jobs configured with these types will use the assigned device.

2. Assign types to queues - Configure the queue that DLT backups will run on. Select a batch queue that executes on the node where you installed EnterpriseBACKUP:

```
MEDIAS> SET QUEUE0 == "SYS$BATCH, DLT"
```

```
MEDIAS> EXIT
```

What it does: Sets up the EnterpriseBACKUP queue QUEUE0 to use the VMS generic queue SYS\$BATCH for all jobs designated with type DLT.

Set commands will update the EnterpriseBACKUP configuration files and restart the server. Once the configuration is complete, the types may be used in adding media to the database and creating backups.

Contact ISE at:
Phone: (310) 643-7310
Fax: (310) 643-7549
E-mail: support@i-s-e.com
Web: www.i-s-e.com



3 Trying out EnterpriseBACKUP

3a Add media to the database

The first step in working with the EnterpriseBACKUP software is adding some media to the database that can be used for the initial backup. To do this you need to have one or more (depending on the size of the backup) blank backup tape and know the media type (see Section 2 for more on media types).

Add 50 media to the database with the name A100 to A150 (for testing purposes, add at least 20):

```
$ MEDIA A100:150 ADD /type=DLT
```

What it does: Adds 50 media to the database of type DLT. You may want to add more or less than 50.

Display the full characteristics of a medium:

```
$ MEDIA A100 DIR/FULL
```

What it does: Displays the complete record for the media A100 including media type, density, owner etc. For a complete description of the media record see the MEDIA Reference Guide.

Assign the media to a user for personal use:

```
$ MEDIA A100 ASSIGN
```

What it does: Assigns the media to a user for use in backups and media library procedures.

Note to Operators: Reply required is only applicable to new media the first time they are initialized.

4 Creating and submitting a backup job

4a Create and submit a backup job using DCL

Once the media has been added into the media database, a backup can be created using that media.

1. In order to create enter the following DCL command procedure and follow the prompts as shown:

```
$ @MEDIA_LIBRARY:BCKMGR_MAINT MAKE_BACKUP
```

Selection (or ?)	(1)	:2
Job name	(BACKUP0)	:SYSDISK
Interval		: ←
Generations to keep	(4)	: ←
Add to Vault database	(YES)	: ←
Which username	(SYSTEM)	: ←
Do a verify	(YES)	: ←
Source disk	(DISK\$ALPHASYS)	: ←
More disks	(NO)	: ←

2. Assign the media to the job to be used in the backup

```
$ BCKMGR ASSIGN SYSDISK A100
```

What it does: Assigns the tape A100 to the SYSDISK job.

3. Submit the backup job immediately:

```
$ BCKMGR SUBMIT SYSDISK
```

What it does: Submits the job for execution.

4b Create and submit a backup job using the MOTIF Interface

EnterpriseBACKUP features a MOTIF GUI client that can be used to create a backup job. Start the EnterpriseBACKUP MOTIF GUI using the following command:

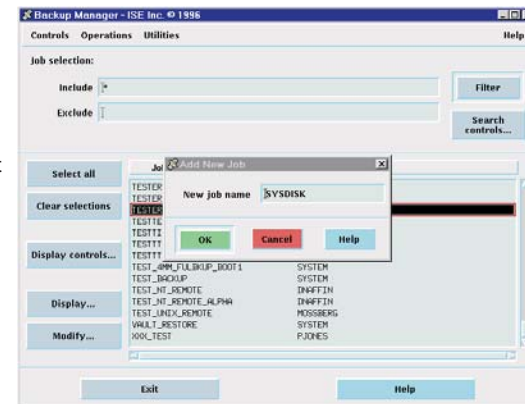
```
$ @MEDIA_LIBRARY:MEDX_MOTIF BCKMGR
```

The Backup Manager module will appear. Select **Create new job...** from the **Utilities** menu and enter the name of the job (SYSDISK) in the field. Click **OK**.

4b Create and submit a backup job using the MOTIF Interface (cont.)

You will now see the backup job definition appear in a dialog box. In the **General description** fields, change the **Job type** to **Cycle**, the **Backup mode** to **3. Full**, the **Media type** to **DLT**, and the **Required** field to **2**. Next, click on the **List** button on the left and enter the name of the disk you want to back up in the first field (e.g. DISK\$ALPHASYS). Click **Apply** to confirm the entry and then **Close** on the bottom.

Next, assign tape A100 by selecting **Media list...** from the **Operations** menu, clicking on **Assign specified...** button and entering A100 (the tape added in step 3a) in the field. You can now submit the backup job by selecting **Submit immediately...** from the **Operations** menu.



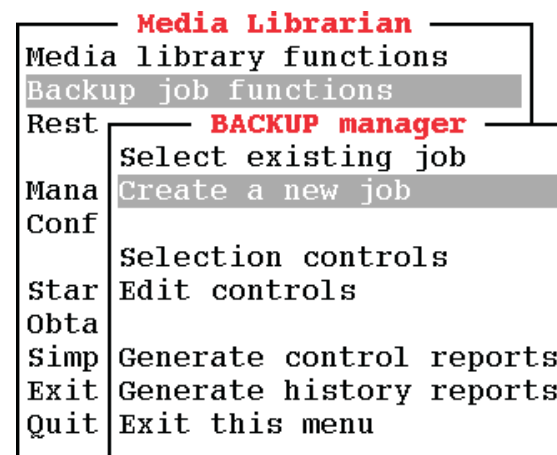
4c Create and submit a backup job using MCL

EnterpriseBACKUP also features a menu/forms interface that can be used to create a backup job when working on a VT terminal either locally or remotely via a modem or over a network connection. To start the MCL EnterpriseBACKUP interface enter the following command:

```
$ MCL/DISPLAY=VT/STARTUP=MED_STARTUP
```

from a VT terminal.

First, select **Backup job functions** from the **Media Librarian**. Select **Create a new job** from the **BACKUP manager** menu. A form will appear to define the backup job. Use the **Find** key to bring up predefined choices. Enter the name of the job (**SYSDISK**), the Media type (**DLT**), the Job type (**1.Cycle**), the Backup Mode (**3.Full**). Use the Enter key to page through the rest of the choices and accept your entries. The Source disk drive list will appear. Enter the name of the drive you want to back up for this test job. After exiting the Section menu, choose **Select existing job** from the Backup manager menu and choose Assign specific medium from the Function menu. Enter a medium created in Step 3a (A100). Your job is now ready to be submitted. To submit the job, select **Submit immediately** from the **Function** menu.



5 Locate the files that were backed up

5a Using the MEDIA online file listing and VAULT command

After the backup completes you can check the online database to view the files that were backed up. Display files backed up to the media used in the backup:

```
$ MEDIA A100 >* OR $ VAULT DISK$ALPHASYS:[*]
```

What it does: Displays the files backed up to the media. This information is stored online for easy access. The VAULT utility can also be used to restore files individually or with wildcards.